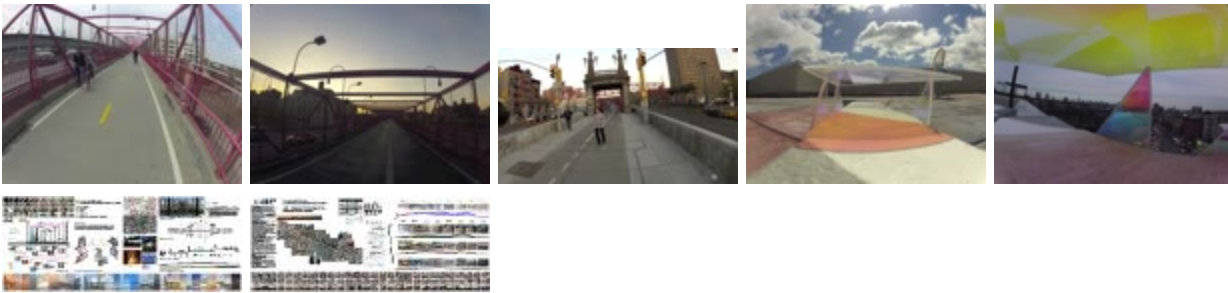


# Crossing Through Weatherlight: Amplifying & Adapting the Williamsburg Bridge



## Related Collection

[Parsons School of Design MFA Lighting Design program theses](#) → [2012 \(PC020404.11\)](#)

## Description

The amplification and adaptation of a spatio-temporal experience through the exploration of the multiplicity of light phenomena within the urban environment's materiality and the rhythm of the users. By being on site, observing and analyzing quantifiable and qualitative data, Crossing through Weatherlight proposes a new daylighting design strategy for the Williamsburg Bridge.

## Date

2012

## Related people

[Natalia Priwin Caleyá](#) (designer)

[Peter M. Wheelwright](#) (thesis advisor)

## Use Restrictions

<http://rightsstatements.org/vocab/InC/1.0/>

## Identifier

PC020404\_2012\_npriwin