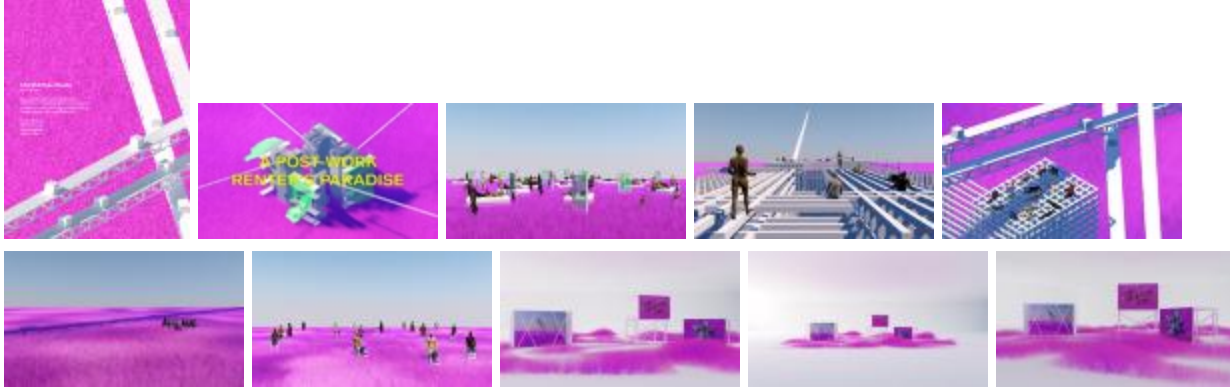


A Post-Work Renter's Paradise



Related Collection

[2020 \(PC020402.16\)](#) → [Parsons School of Design MFA Design and Technology program theses](#)

Description

In A Post-Work Renter's Paradise productivity is for robots; children belong to themselves; to work is to reproduce; and everyone is a surrogate. In this post-capitalist world, productive labor has been automated, and the work left for humans to perform is solely reproductive. The social sphere is a stage for leisure and reproduction – the robots handle the rest. Human labor is no longer about productivity, but about maintaining the social and physical infrastructures that have stalled with the dissolution of capitalism. Architecture is in a state of limbo, and in constant need of repair and maintenance. Inspired by non-biological forms of kinship, the family as we know it is extinct, and everyone is a substitute for each other.

Creator Keywords:

automation; reproductive labor; speculative design; digital storytelling; experimental narrative; post work

Date

April 29 2020

Related people

[June Lee](#) (designer)

[Anezka Sebek](#) (thesis advisor)

[Anna Harsanyi](#) (thesis advisor)

[Richard The](#) (thesis advisor)

Related Repository

[Parsons Institutional Collections](#)

Use Restrictions

In accordance with The New School's Intellectual Property Rights Policy, copyright is held by each thesis' respective author. The responsibility to secure copyright permission rests with the user.; <http://rightsstatements.org/vocab/InC/1.0/>

Identifier

PC020402_2020_leej443