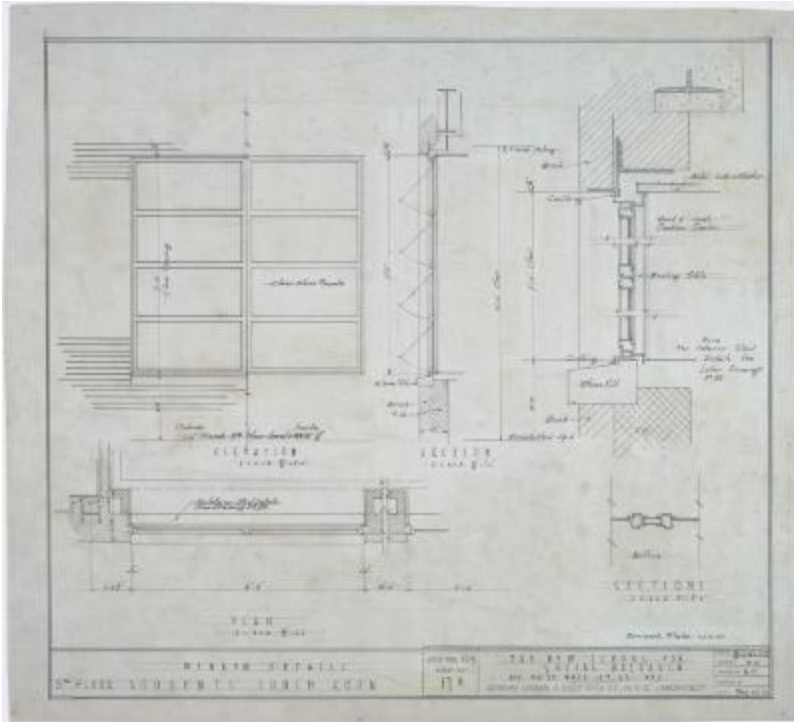


# Window Details Fifth Floor Student Lunch Room



## Related Collection

[New School Architectural plans and drawings for 66 West Twelfth Street](#)

## Description

Elevation, plan and section for windows in the student lunchroom on the fifth floor of the New School for Social Research's building at 66 West 12th Street, from a folder entitled, "Windows and doors: Plans, details."

## Date

1930

## Related people

[New School for Social Research \(New York, N.Y. : 1919-1997\)](#) (commissioner)  
[Joseph Urban](#) (architect)

## Work Type

plans (orthographic projections)

## **Use Restrictions**

<http://rightsstatements.org/vocab/InC/1.0/>

## **Location**

box n\_OSxx-1, folder 5

## **Identifier**

NS090101\_000010