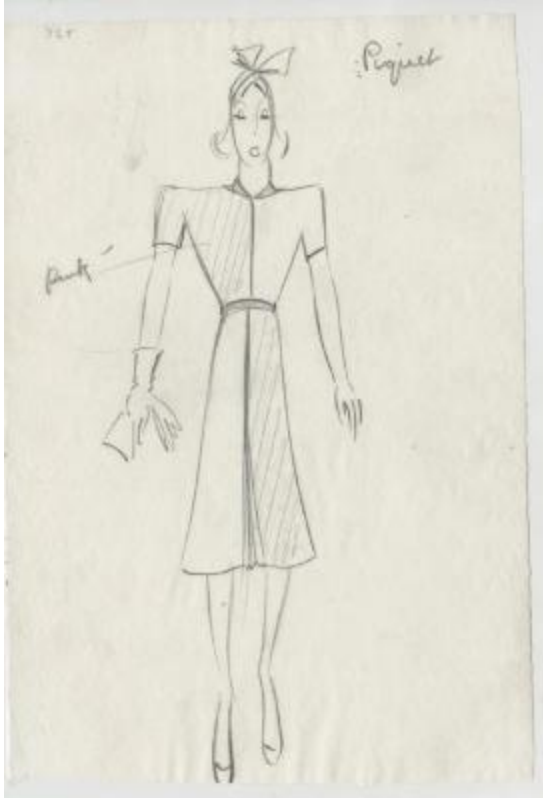


# Short-Sleeved Two-Toned Dress



## Related Collection

[Herbert Sondheim, Inc. fashion business scrapbooks](#)

## Description

Short-sleeved two-toned dress with a knee-length flared skirt (possibly with center vent), belted waist, and a small collar. Sketch is in black and white, although text indicates that one of the colors of the dress is pink. Full ensemble includes gloves and a bow headpiece.

## Date

1935 – 1940

## Related people

[Herbert Sondheim, Inc](#) (compiler)

[Robert Piquet](#) (compiler)

## Work Type

design drawings

Page 1 of 2

## **Measurements**

5.5 in (width) x 8 in (height)

## **Inscription**

[Right]: Piguet [Left]: pink (text)

## **Related Repository**

[Kellen Design Archives](#)

## **Use Restrictions**

<http://rightsstatements.org/vocab/InC/1.0/>

## **Location**

box 1, folder 33

## **Identifier**

KA0039\_V8p33-005