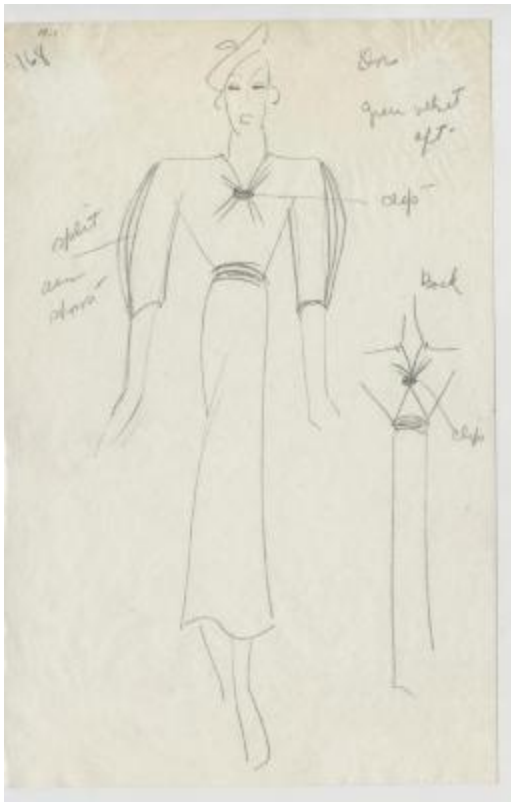


# Green Velvet Dress with Elbow-Length Split Sleeves



## Related Collection

[Herbert Sondheim, Inc. fashion business scrapbooks](#)

## Description

Green velvet dress with a belted waist, calf-length skirt, v-neckline featuring a clip at the bottom center, and elbow-length split sleeves that reveal the wearer's arms. Sketch also includes a back view of the dress that shows another clip in the center back and what appears to be skin showing at the lower back. Model wears a beret style hat.

## Date

1930s

## Related people

[Herbert Sondheim, Inc](#) (compiler)

[Marcelle Dormoy](#) (designer)

## Work Type

design drawings

## Measurements

5.25 in (width) x 8.25 in (height)

## Inscription

[Right]: Dor/green velvet/[aft?]/clip/Back/clip [Left]: split/arm/shows (text)

## Related Repository

[Kellen Design Archives](#)

## Use Restrictions

<http://rightsstatements.org/vocab/InC/1.0/>

## Location

box 1, folder 19

## Identifier

KA0039\_V8p19-001

## Related Objects

