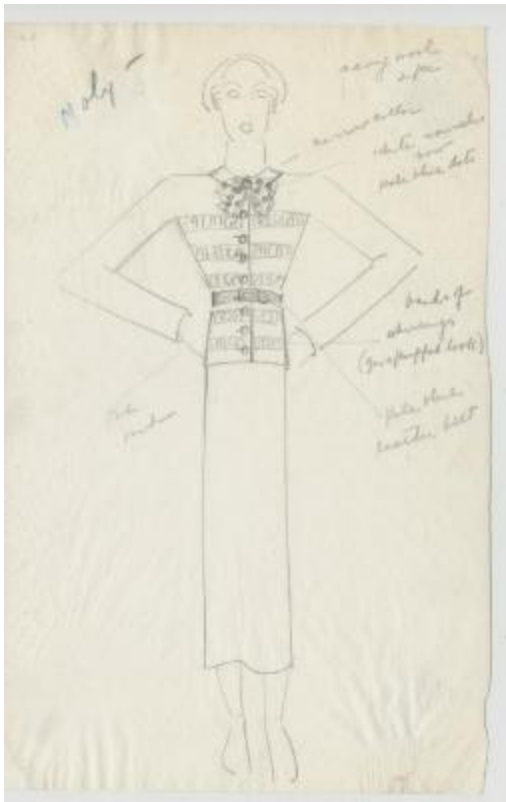


# Women's Navy Blue Wool Ensemble with Dot Bow and Bands of Shirring



## Related Collection

[Herbert Sondheim, Inc. fashion business scrapbooks](#)

## Description

Navy blue wool two-piece ensemble with a small collar, calf-length skirt, pale blue leather belt, and a white mousseline bow with pale blue dots at the neck. The long-sleeved jacket features six bands of shirring that give a "puffed look".

## Date

1930s

## Related people

[Herbert Sondheim, Inc](#) (compiler)  
[Edward Henry Molyneux](#) (designer)

## Work Type

Page 1 of 2

design drawings

## Measurements

5.25 in (width) x 8.25 in (height)

## Inscription

[Right]: navy wool/2 pc/narrow collar/white mousseline/bow/pale blue dots/bands of/shirring/(give puffed look)/pale blue/leather belt [Left]: Moly/one/band (text)

## Related Repository

[Kellen Design Archives](#)

## Use Restrictions

<http://rightsstatements.org/vocab/InC/1.0/>

## Location

box 1, folder 12

## Identifier

KA0039\_V8p12-003

## Related Objects

