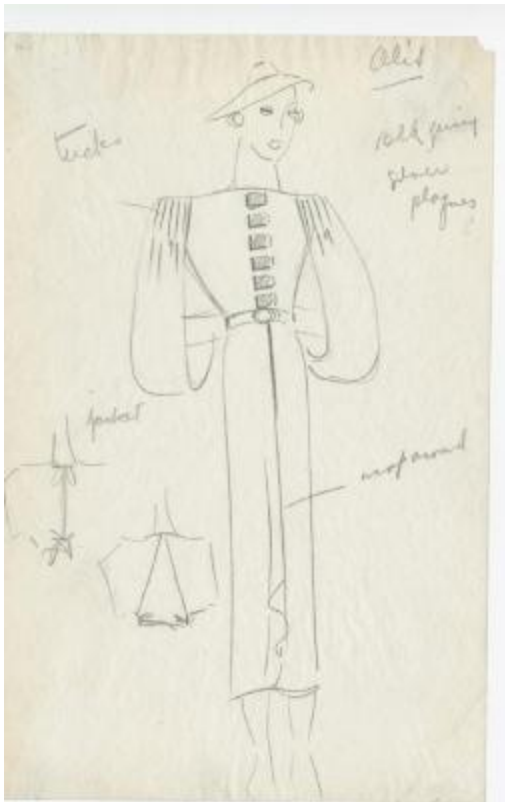


Black Jersey Women's Ensemble with Silver Plaque Accents



Related Collection

[Herbert Sondheim, Inc. fashion business scrapbooks](#)

Description

Black jersey ensemble with a belted waist, calf-length wrap skirt, silver plaque accents along the center of the front bodice, and a jacket featuring long looped sleeves and tucks at the shoulders. Sketch also includes two small views including what appears to be the back of the jacket showing open sections and small bows.

Date

1930s

Related people

[Herbert Sondheim, Inc](#) (compiler)

[Alix Grès](#) (designer)

Work Type

design drawings

Measurements

5.25 in (width) x 8.25 in (width)

Inscription

[Right]: Alix/Blk jersey/silver/plaques/wrap around [Left]: tucks/jacket (text)

Related Repository

[Kellen Design Archives](#)

Use Restrictions

<http://rightsstatements.org/vocab/InC/1.0/>

Location

box 1, folder 12

Identifier

KA0039_V8p12-001