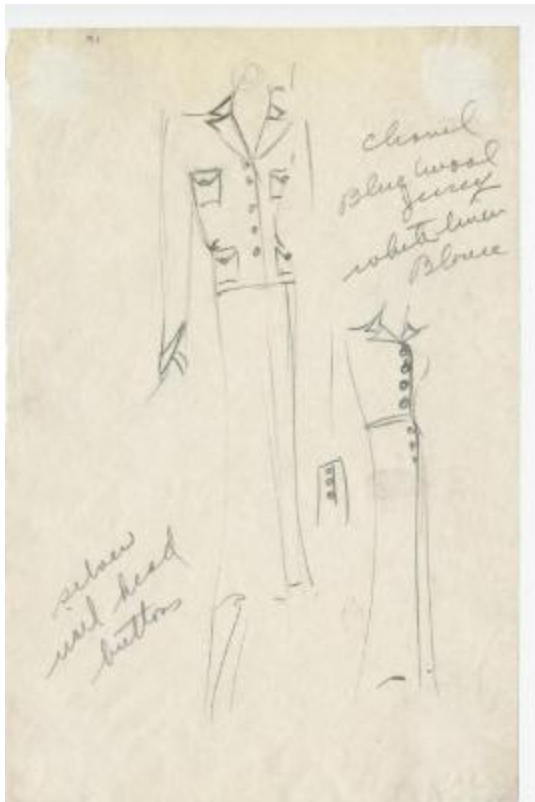


Women's Blue Wool Jersey Ensemble with Silver Nailhead Buttons



Related Collection

[Herbert Sondheim, Inc. fashion business scrapbooks](#)

Description

Blue wool jersey women's ensemble with a calf-length wrap skirt and fitted jacket with four square pockets and silver nail head buttons. Sketch also includes a separate view depicting what appears to be a separate ensemble or a view of the ensemble worn without the jacket to show a white linen blouse with buttons along the side.

Date

1930s

Related people

[Herbert Sondheim, Inc](#) (compiler)

[Coco Chanel](#) (designer)

Work Type

design drawings

Measurements

5.5 in (width) x 8.5 in (height)

Inscription

[Right]: Chanel/Blue wool/Jersey/white linen/Blouse [Left]: silver/nail head/buttons (text)

Related Repository

[Kellen Design Archives](#)

Use Restrictions

<http://rightsstatements.org/vocab/InC/1.0/>

Location

box 1, folder 9

Identifier

KA0039_V8p09-001