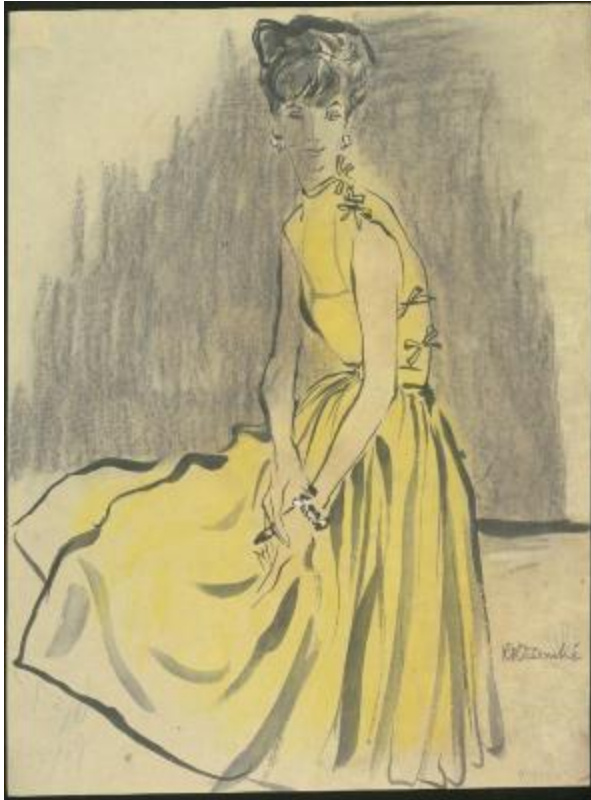


Sleeveless Yellow Dress with Small Bows



Related Collection

[René Bouché fashion illustrations](#)

Artist

René Bouché

Description

Yellow dress by an unknown designer featuring a sleeveless bodice, full skirt, and small bows tied across the shoulder line and down the side(s) of the bodice. The dress is worn with a white beaded bracelet and matching earrings.

Date

1950s

Related person

[René Bouché](#) (artist)

Work Type

drawings

Measurements

17.5 in (width) x 23.5 in (height)

Inscription

RRBouchÃ© (signature)

6/57/[Ref?] (text)

Related Repository

[Kellen Design Archives](#)

Use Restrictions

<http://rightsstatements.org/vocab/InC/1.0/>

Location

box OSxxx6, folder 1

Identifier

KA0038_000047