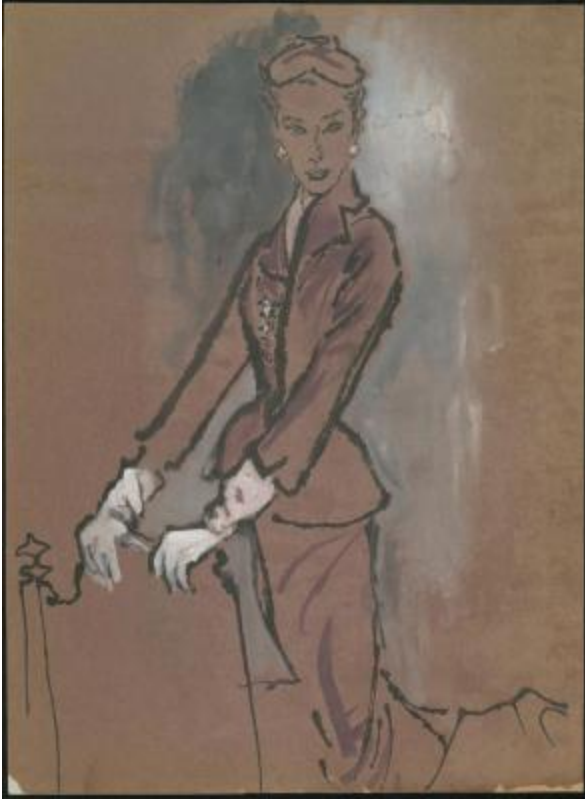


# Women's Late-Day Suit in Wine Velveteen



## Related Collection

[René Bouché fashion illustrations](#)

## Artist

René Bouché

## Description

An alternate version of this illustration appeared in the September 1, 1950 issue of Vogue on page 158. According to the caption, the illustration depicts a late-day suit in wine colored velveteen, featuring a notched collar, peplum waist, and fitted skirt. The suit is worn with a coordinating hat and white gloves.

## Date

1950

## Related people

[René Bouché](#) (artist)

[Hattie Carnegie](#) (designer)  
[Vogue \(New York\)](#) (commissioner)

## Work Type

drawings

## Measurements

17.5 in (width) x 24 in (height)

## Inscription

L + T Interior 19, Group E, Sept 1/50 (text)

## Related Repository

[Kellen Design Archives](#)

## Use Restrictions

<http://rightsstatements.org/vocab/InC/1.0/>

## Location

box OSxxx4, folder 1

## Identifier

KA0038\_000032

## Related Objects

